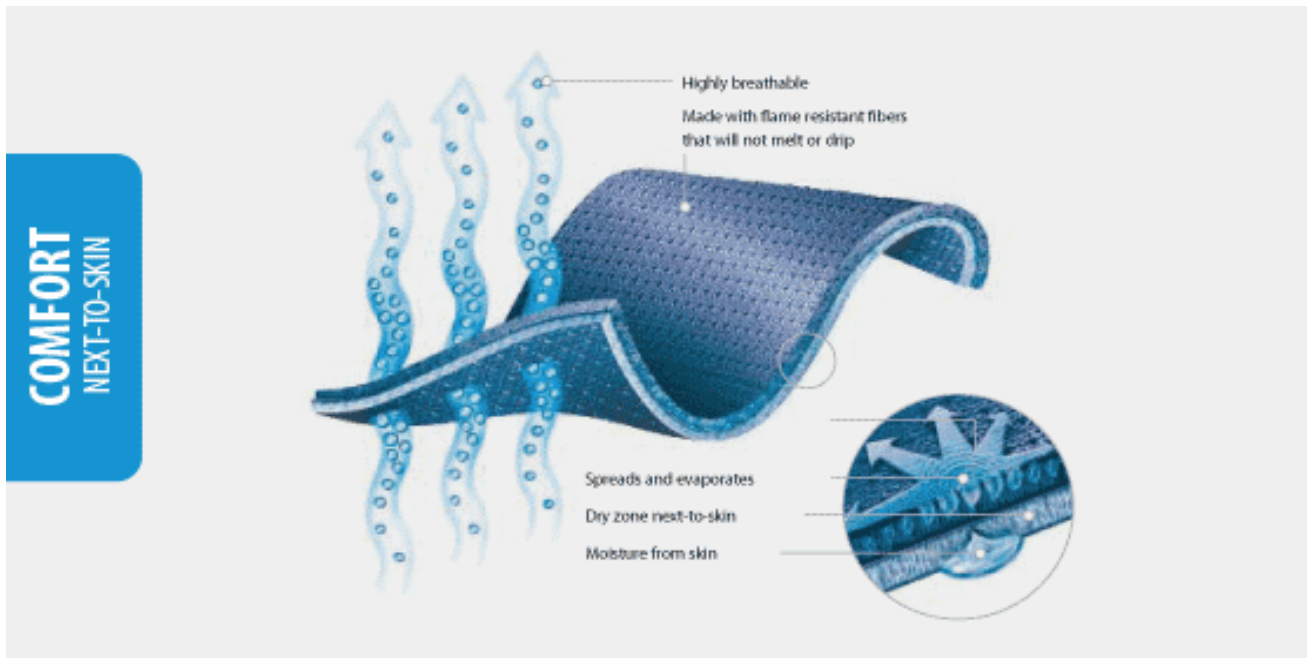




# MATERIAL SPECS

## POLARTEC® POWER DRY FR®



### Features

- Superior wicking action
- Keeps your skin dry when you sweat
- Highly breathable
- Dries quickly, 2x faster than cotton
- Comfortable next-to-skin
- Moves at least 30% more moisture away from the skin than single-component fabrics.

### Weight

- Lightweight 5.2 oz sq/yd
- Midweight 6.4 oz sq/yd
- Hi-Viz: 8.75 oz sq/yd

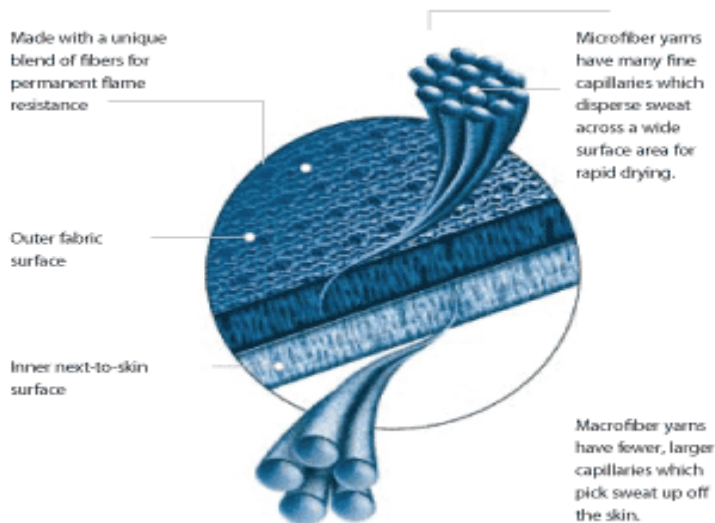
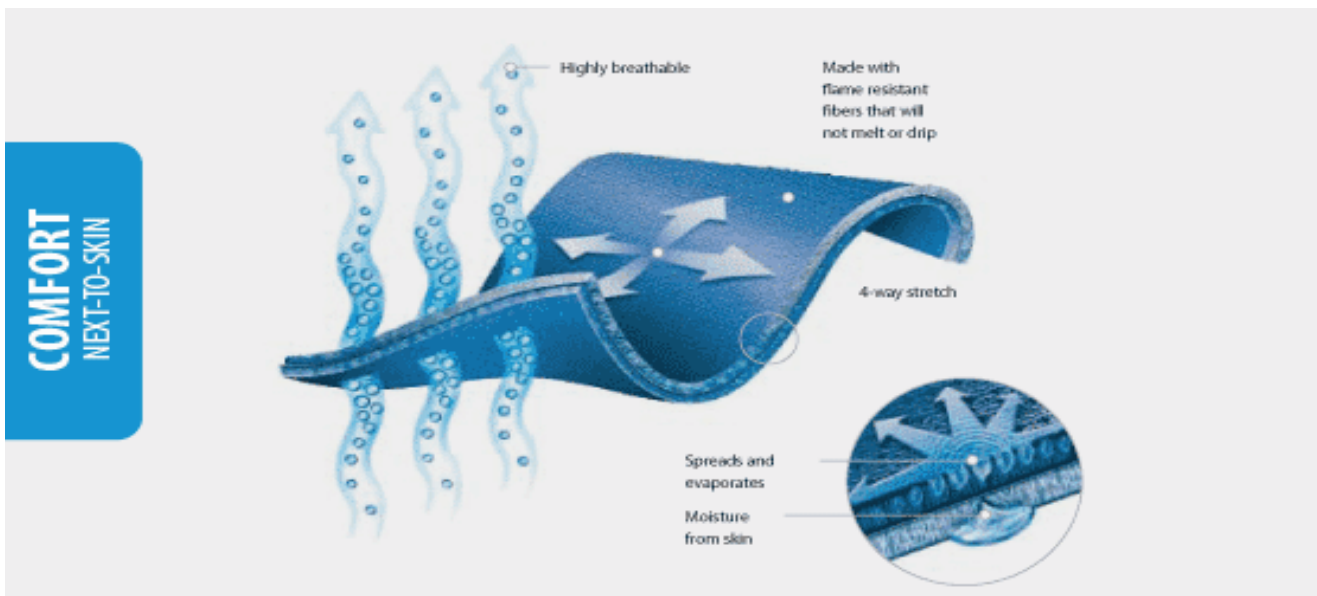
### Fiber Content

- Lightweight: 72% Modacrylic, 28% Rayon Midweight: 66% Modacrylic, 29% Rayon, 5% Spandex
- Midweight: Rayon, Modacrylic, Para-aramid
- Hi-Viz: 70% Modacrylic, 15% Lenzing FR, 15% Rayon

### Care

Machine wash lukewarm (up to 40 C, 105F), tumble dry low temperature. Do not bleach. Avoid the use of fabric softeners. Do not iron and do not dry clean.

## POLARTEC® POWER STRETCH FR®



### Features

- Proprietary grid construction with lofted fleece
- High/Low interior grid structure enhances airflow and dry time
- Permanent flame resistance
- 4-way stretch
- Wicking and quick drying
- Warmth without the weight
- Soft surface provides all day comfort

## Weight

- 9.2 oz sq/yd

## Fiber Content

- Rayon, Modacrylic, Para-aramid, FR Spandex

## Care

Machine wash lukewarm (up to 40 C, 105F), tumble dry low temperature. Do not bleach. Avoid the use of fabric softeners. Do not iron and do not dry clean.

# POLARTEC® POWER SHIELD FR®



## Features

- Dragonwear proprietary fabric

- Permanent flame resistance
- Blocks 98% of the wind
- Water resistant, sheds rain and snow
- Warmth without the bulk and weight
- Breathable for active use
- Durable and extremely abrasion resistant

## Weight

- 16.9 oz sq/yd

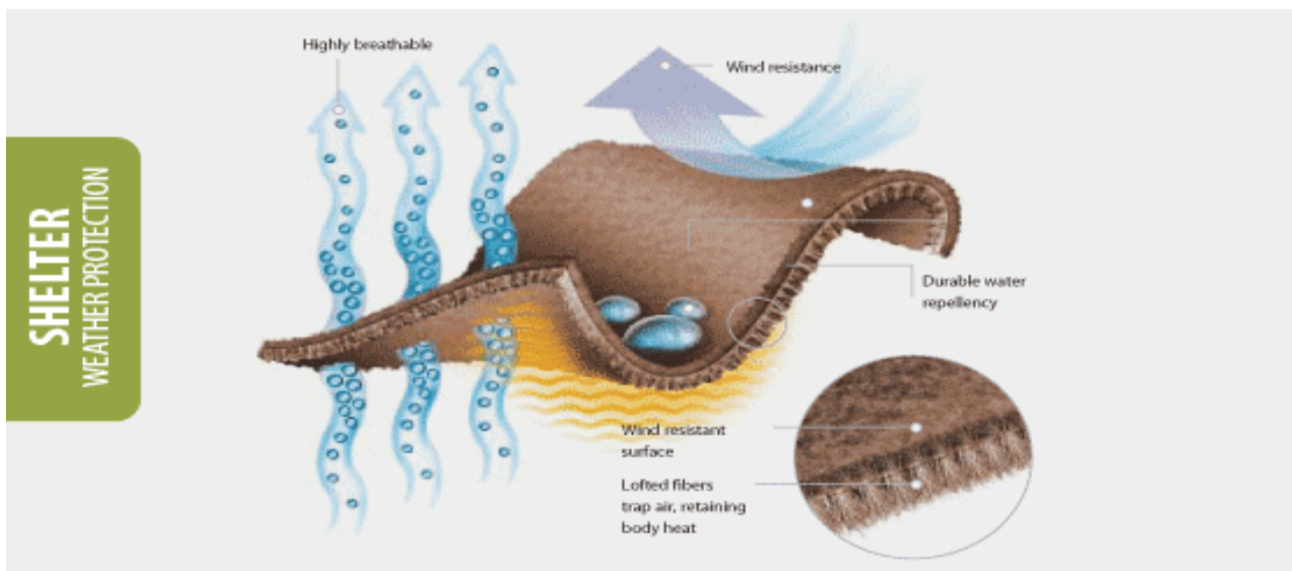
## Fiber Content

- Face: Modacrylic, Rayon, FR Spandex

## Care

- Machine wash lukewarm (up to 40 C, 105F), tumble dry low temperature. Do not bleach. Avoid the use of fabric softeners. Do not iron and do not dry clean.

# POLARTEC® WIND PRO FR®



## Features

- Inherently flame resistant
- Doesn't fade due to washing or UV light
- Durable water repellency sheds light rain and snow

- Excellent stretch
- Outstanding breathability
- Wind resistant

### **Weight**

- 10 oz sq/yd

### **Fiber Content**

- Rayon, Modacrylic, Para-aramid, Spandex

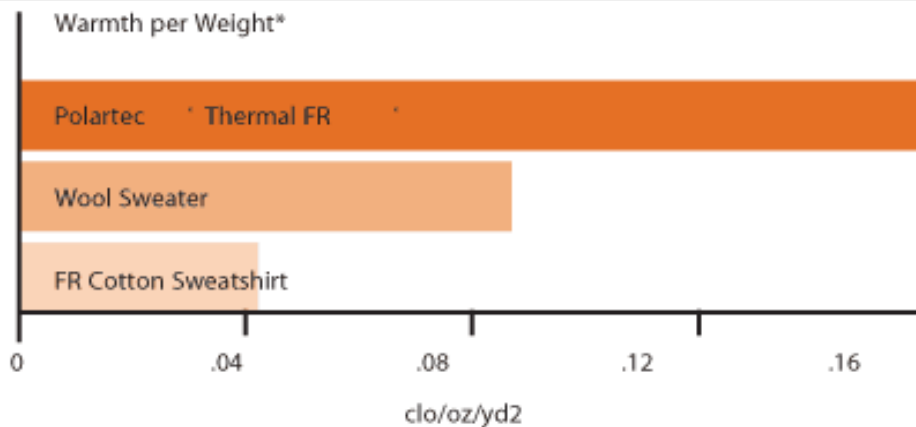
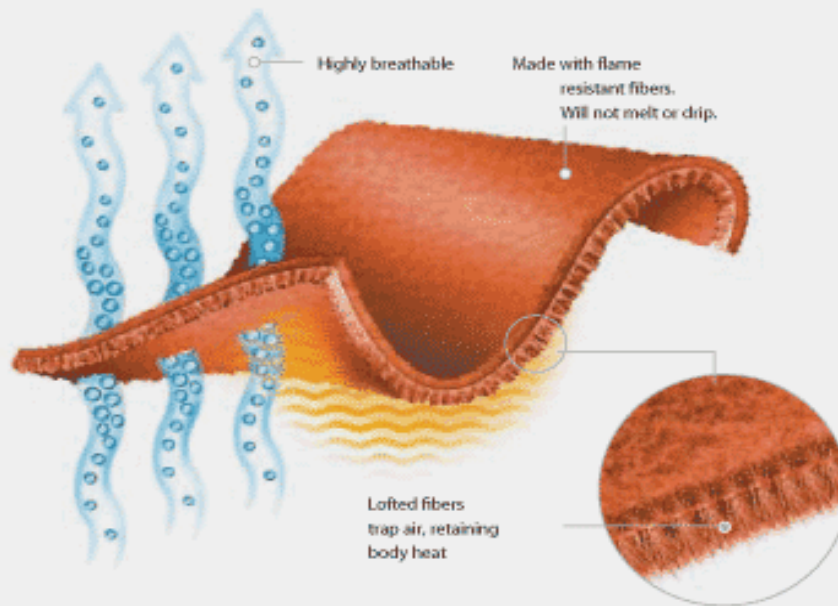
### **Care**

- Machine wash lukewarm (up to 40 C, 105F), tumble dry low temperature. Do not bleach. Avoid the use of fabric softeners. Do not iron and do not dry clean.

## **POLARTEC® NOMEX® THERMAL FR®**



## WARMTH INSULATION



Thermal Transmittance/Insulation Test:  
The test is conducted according to ASTM D 1518.  
Insulation property is measured in clo values. The higher the clo value, the greater the insulation properties.

## Features

Permanent flame resistance that will not melt or drip. Doesn't fade due to washing or UV light Warmth without the bulk and weight. Highly breathable, dries quickly, extremely durable.

- Distinctive surface textures
- Warmth without weight
- Highly breathable
- Dries quickly
- Machine washable
- Versatile use



## Weight

- 12 oz sq/yd

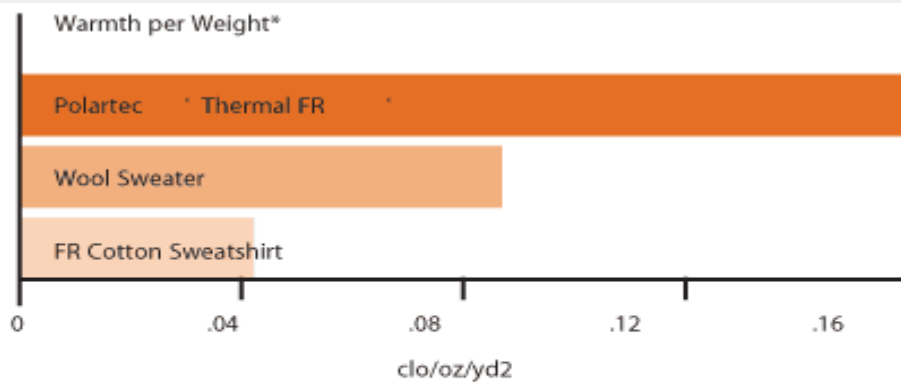
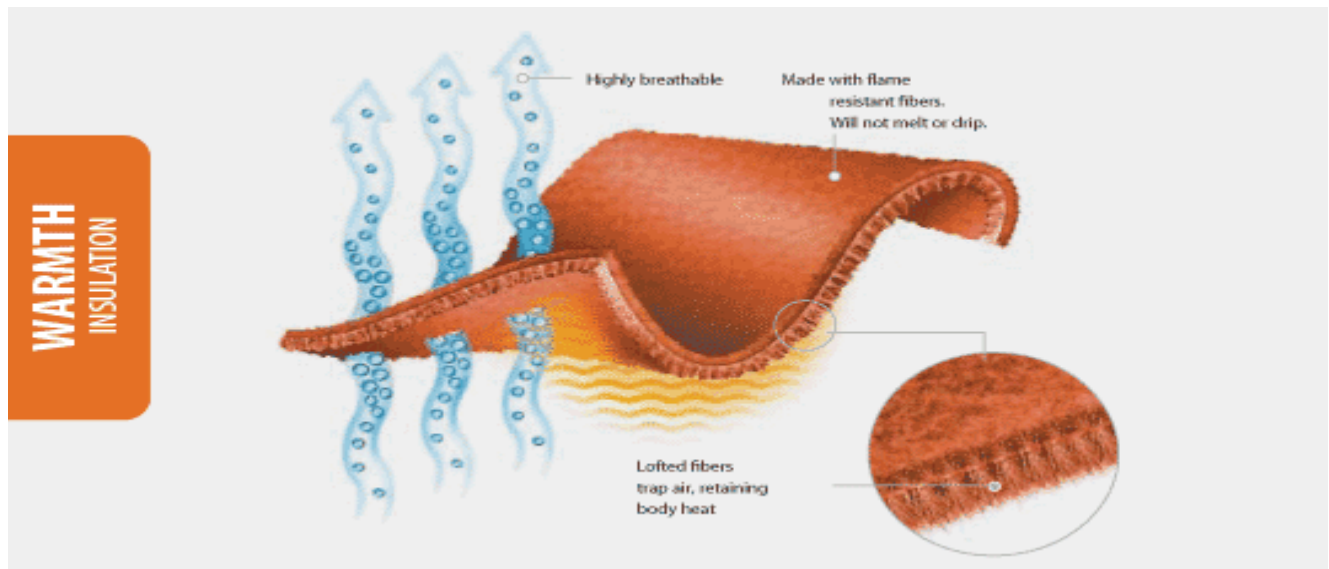
## Fiber Content

- 93% Nomex, 5% Kevlar, 2% Carbon

## Care

Machine wash warm. Tumble dry low. Do not bleach. Avoid the use of fabric softeners. Do not iron and do not dry clean. For best results, launder garment separately.

# POLARTEC® THERMAL FR®



Thermal Transmittance/Insulation Test:  
The test is conducted according to ASTM D 1518.  
Insulation property is measured in clo values. The higher the clo value, the greater the insulation properties.

## **Features**

Permanent flame resistance that will not melt or drip. Doesn't fade due to washing or UV light Warmth without the bulk and weight. Highly breathable, dries quickly, extremely durable.

- Distinctive surface textures
- Warmth without weight
- Highly breathable
- Dries quickly
- Machine washable
- Versatile use

## **Weight**

- 12 oz sq/yd

## **Fiber Content**

- 70% Modacrylic, 30% Rayon

## **Care**

Machine wash warm. Tumble dry low. Do not bleach. Avoid the use of fabric softeners. Do not iron and do not dry clean. For best results, launder garment separately.